

Kings CCSD #144

Return To Full-Time In-Person Learning

2021-2022

The following plan adheres to guidance provided by the Illinois School Board of Education (ISBE) Illinois Department of Public Health (IDPH) Ogle County Health Department (OCHD) and American Rescue Plan (ARP) ESSER III



Kings CCSD # 144 Return To Full-Day In-Person Learning

Dear Students, Families, and Staff:

On Wednesday, August 4, 2021, Governor Pritzker announced that, effective immediately, all Illinois schools (public and private) must follow the CDC's guidance on universal masking. Therefore, all teachers, staff, students, and visitors to PK-12 Kings School must wear a mask while indoors (and on school transportation), regardless of vaccination status. As with previous mask mandate orders, individuals who cannot wear a mask because of an ADA disability are exempt from this requirement. Students meeting this requirement will be required to provide specific documentation from their doctor. Please contact the school directly if you feel your child meets these requirements. Additionally, the IHSA is expected to release further guidance on masking requirements for sporting events. Currently all indoor sporting events will require masking of all players, coaches, referees, and spectators.

School districts that do not comply with this new gubernatorial order potentially risk liability and denial of liability insurance coverage. Additionally, ISBE could remove recognition status for any school districts not following the Governor's order and remove all state funding. For these reasons, which go beyond the inherent health concerns caused by the virus, it is recommended that the district not defy this Executive Order.

Kings CCSD #144 continues to work closely with the Ogle County Health Department, IDPH, ISBE, and other health officials to ensure the safest approach to learning for our students, staff, and their families. We are grateful to report our approach to health and safety was successful this past school year and we expect to follow similar procedures and protocols as students return for in-person instruction this school year.

The district's prevention strategies will continue to follow CDC guidelines and include social distancing to the greatest extent possible, increased ventilation, daily cleaning and sanitization, reporting and tracing cases of COVID-19 amongst students and staff, exclusion of persons symptomatic from all district buildings, and other strategies. District administration will closely monitor possible exposure and transmission of COVID-19 in our schools and respond with additional measures if needed. Metrics and mitigation measures will be published on the district website and shared with parents and staff. The district is currently exploring on-site screening and testing options for students and staff to reduce the number of quarantines needed throughout the school.

According to ISBE, remote instruction must be provided for students who have not received a COVID-19 vaccine or who are not eligible for a COVID-19 vaccine, only while they are under quarantine consistent with guidance or requirements from a local public health department or the Illinois Department of Public Health. School districts are not required to provide remote instruction to students who refuse to come to school because of the universal masking requirement. A remote learning plan is being developed that meets the requirements put forth by the state for students in quarantine. More information on this topic can be found in the school's **Return to Full-time In-Person Learning 2021-2022 Plan** on the school website. Additionally, the district has adopted a policy that allows immunocompromised students to attend school remotely. Documentation will be required to prove that the student's health is greatly jeopardized by returning to school in-person. All remote instruction will look very different from last year, with most work being provided for students to complete independently at home for the duration of their quarantine.

We anticipate safely returning to full-day in-person instruction on **Thursday, August 17th**. We will return to **normal school hours, 8:25-3:00, on that 17th of August**. We will also be returning to our professional development early dismissal days on the 1st Wednesday of every month, with dismissal being at 2:30 PM on these days. Otherwise, it is expected that students will return to a typical school day schedule including specials, recesses, and lunch periods.

Please expect additional updates to follow as we continue to consult with health officials and plan the safest transition back to full-day in-person learning. Please contact the school (815)562-7191 with any questions. As always, thank you for your continued support as we work together to provide safe learning environments and the best learning opportunities for all our students. As guidance is ever changing in this pandemic, we are grateful for your continued support and understanding. We look forward to another successful school year.

Sincerely,
Matthew Lamb, Superintendent

Summary of Return to Full-Time In-Person Learning Plan

Since late May, communications regarding reopening have occurred regularly between administrators, School Board, teachers, support staff and union leadership to discuss and collaborate on several plans to resume school for the 21-22 School Year. The reopening plan is grounded in the following foundational beliefs:

- Protecting the health and safety of all students and staff to the greatest extent possible is the top priority.
- Safely bringing students and staff back to school but also ensuring our practices keep students in school.
- Ensuring appropriate rigor to promote student academic and social emotional growth. Interventions will be strengthened to address skill deficiencies that may have emerged due to the disruption in the educational process.
- Re-establishing relationships and ensuring that the social emotional needs of students and the basic wellness needs of families will be prominent in the learning, resource allocation and decision-making processes.
- Creating a reopening plan that is in compliance with state and local directives and guidance while incorporating the agility and flexibility to adjust for the potential of rapidly changing environments and expectations.
- Developing common and clear requirements to implement a reopening plan that meets the needs of the community and the students they serve.
- Addressing public health requirements for personal protective equipment (PPE) and physical distancing requirements including:
 - Face coverings
 - Capacity limits in one space
 - Social distancing
 - Symptom screening
 - Schoolwide cleaning and disinfection

This plan may need to be altered based on new guidance or recommendations and is to be considered a fluid plan.

At this time, with current recommendations and guidelines being followed, our plan looks like:

➤ **In-person instruction:**

- All in-person learning will take place with a **starting time of 8:25 a.m.** and continue until dismissal at **3:00 p.m.**
- All students will attend everyday.
- All students and staff are required to wear masks.
- We will socially distance ourselves to the greatest extent possible.
- Supplies will be limited to only one per person.
- Lunch will be served daily. Students will have a seating chart and be distanced to the greatest extent possible.
- Breakfast will be passed out as a grab and go option at the end of each school day.
- Lunch and breakfast will continue to be provided free of charge.
- Each student will be issued a district Chromebook.
- PE, music, and art will return to in-person instruction. All specials will return to 30 minute periods. PE will occur daily for all students. PE will be held in the gymnasium or outside. All other specials will be held in the specials classroom.
- Transitions and passing periods will be reinstated for students in grades 6-8 and must follow social distancing requirements.
- Use of a locker will be reinstated and will follow social distancing guidelines.
- Buses will provide transportation for those students who qualify, and masks must be worn on the bus.
- Classroom instruction for students in K-5 will include ELA, math, science or social studies, social-emotional learning, and intervention daily.
- Classroom instruction for students in 6-8 will include ELA, math, science, and social studies.
- 6-8 students will rotate classrooms.
- Students in grades k-5 will receive at least one 25 minute recess period daily.
- Mask breaks will be at the teacher's discretion.
- Students unable to attend in-person will no longer have the option to attend classes remotely. Any absences from school will be documented as an absence.
-

➤ **Student in quarantine or with medical exception remote learning plan**

Due to teachers returning to full-time in-person instruction, they will be responsible for their class for the entirety of the school day. This will limit the amount of time they will have available to assist remote learners. Teachers will create a schedule for remote learners stating specific time students must attend class virtually (ISBE requirement of 2 hours per week). As this may follow their in-person schedule, students may have multiple meeting times throughout the school day to

attend. Teachers will provide instruction, answer questions, and direct remote students to complete work independently. Parents will be expected to assist students with work completion, answering questions, and other needs remote learners may have while learning at home.

- Your student will be assigned a grade level or content teacher to access their learning from home. Teachers may provide live feed lessons/instruction time for remote students. Pre-recordings may be made or shared.
- Students should expect 2 hours weekly of synchronous instruction with their class/teacher.
- Students should expect to complete their course work independently.
- Students receiving remote instruction will have the same requirements for work completion and classroom attendance as students attending in-person.
- Your student will be assigned a district Chromebook. A reliable internet connection provided by a parent/guardian is essential. If you need assistance with a connection, please contact the office.
- Your student will be responsible for meeting their teachers' communication and participation expectations. This could mean attending a class remotely on a specified schedule from home similar to the schedule for in person instruction.
- All assignments will be posted by 8 a.m.daily.
- Students will be expected to check-in for attendance at 8 a.m. daily. This may be done through google classroom or by email submission, as directed by your teacher.
- Students may email questions to teachers throughout the day, however teachers may only be able to respond after 2:30 p.m. Students in live feed sessions will be able to post questions during the live feed.
- Remote learning will be more rigorous and engaging including full grading of homework and assessments.
- Students are responsible for attending all online classes as well as completing work.
- Parents will be responsible for ensuring that students are completing and submitting work. They also are expected to ensure that their child is attending all live sessions as scheduled by the teacher.
- All teachers will use the same platform to deliver assignments. This platform will be Google Classroom.
-

➤ **Special considerations**

- Athletic and extra-curricular policies are still being determined as additional guidelines are released.
- Currently, all indoor activities require masking.

UNDERSTANDING, PATIENCE, & FLEXIBILITY

As a school district, we ask for your continued understanding, patience, and flexibility during this most challenging time. Kings School has worked diligently to create and implement the best plan possible considering current guidance from ISBE and IDPH, along with feedback from parents.

Students, parents, and community members must also understand that Kings School may need to go to 100% remote learning for a wide variety of reasons. Some possible scenarios include:

- Execute order by the Governor
- Community or district experiences the spread of COVID-19
- The district has too many students ill / symptomatic / quarantining and is unable to host students
- The district has too many teachers or staff ill / symptomatic / quarantining and is unable to teach students
- The district has too many bus drivers ill / symptomatic / quarantining and is unable to transport students

Protocols and Procedures to Maintain Safe Learning Environments

To ensure we are fully supporting and maintaining safe learning environments for students and staff, Kings School will:

- Regularly review updated guidance from ISBE, IDPH and OCHD.
- Utilize a new, more rigorous Remote Learning Plan in the event of an outbreak in a classroom or entire school. If a class or the school needs to quarantine, students will return to the remote learning format utilized earlier this year.
- Engage families and staff to address concerns that may need to be addressed or identify additional preparations for classroom and non-classroom environments as needed.
- Communicate with parents, staff, students and the community on a timely and regular basis to ensure they remain informed of our plans.
- Communicate and collaborate with community partners to ensure we are supporting students, families and the greater community.

Kings School will teach and reinforce washing hands, avoiding contact with one's eyes, nose, and mouth, and covering coughs and sneezes among students and staff.

- Students and staff will sanitize or wash hands before and after eating; after coughing or sneezing; after being outside; and after using the restroom.
- Students will wash their hands or use hand sanitizer upon entry to the classroom.
- Staff will model and practice handwashing and appropriate use of face coverings.

- Students and staff will use hand sanitizer when handwashing is not practicable.
- Hand sanitizer will be widely available throughout the building for student and staff use.
- Routines will be developed for students and staff to regularly wash their hands or use hand sanitizer both inside and outside the classroom.
- Food service workers will use gloves and facial coverings, as required, by public health guidelines.
- Schools will be stocked with adequate supplies to support healthy hygiene behaviors, including soap and hand sanitizers.

Face Coverings (Masks)

At this time, face coverings will be required for all students/staff. Kings School will develop strategies and practices for students and staff to take safe, periodic breaks throughout the day to remove face coverings. Families and staff who have concerns about the use of face coverings should contact their building principal or superintendent. The school will provide masks for each child. Parents may also choose to provide their child(ren) with their own masks. Face shields may also be used to provide specific instruction in speech and/or other content areas where seeing the movement of the mouth is needed. Face shields are not acceptable for use in place of a mask.

How cloth face coverings work

Cloth face coverings may prevent the person wearing the mask from spreading respiratory droplets when talking, sneezing, or coughing. If everyone wears a cloth face covering when out in public, such as going to the grocery store, the risk of exposure to viruses can be reduced. Since people may spread the virus before symptoms start, or even if people never have symptoms, wearing a cloth face covering may protect others around you. Face coverings worn by others may protect you from getting the virus from people carrying the virus.

General considerations for the use of cloth face coverings

When using a cloth face covering, make sure:

- The mouth and nose are fully covered
- The covering fits snugly against the sides of the face so there are no gaps
- You do not have any difficulty breathing while wearing the cloth face covering
- The cloth face covering can be tied or otherwise secured to prevent slipping
- Wash your cloth face covering after each use in the washing machine or by hand using a bleach solution. Allow it to completely dry.

Students and staff who elect to wear their own personal face covering must ensure that the mouth and nose are fully covered and the covering fits snugly against the sides of the face so there are no gaps.

ISBE has directed that schools must have a progressive discipline plan in place to deal with any students who refuse to comply with mask mandates. Parents will be notified if their child is not meeting mandatory requirements. Exclusionary measures may be taken in extreme cases when a student refuses to comply with masking mandates as part of the progressive discipline plan.

Cleaning and Disinfecting

All Kings School cleaning, disinfecting and ventilation practices will follow the procedures and expectations outlined below that align with ISBE, IDPH and OCHD guidelines. These procedures will be updated with any change in guidelines and students and families will be informed of any changes procedures and expectations. Our current dismissal schedule allows custodial staff to ensure that proper cleaning and disinfecting occur daily in all areas of the building.

Cleaning

- Hand hygiene practices such as handwashing and or sanitizing during key times each day will be promoted.
- Ensure that students and staff with sensitive skin reactions to hand sanitizer can use soap and water.
- As necessary, desks will be cleaned with soap and water after certain activities.
- Students' use of the restroom will be closely supervised to avoid gatherings.
- Schools will discourage the use of items that are difficult to clean.

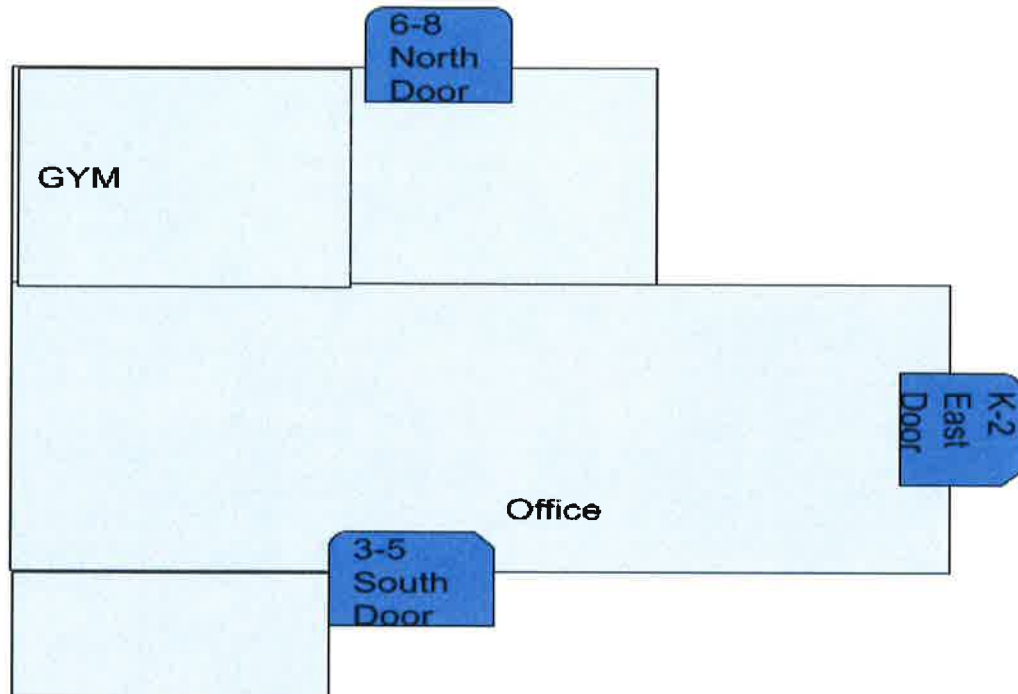
Disinfecting

- Restrooms will be regularly disinfected by staff.
- High touch areas will be disinfected throughout the day by staff.
- Hand sanitizers will be made available throughout the building.
- EPA approved disinfecting products will be used to disinfect hard surfaces throughout the day and after school.
- Drinking fountains will be shut down. Students are encouraged to bring a filled water bottle with them each day.

Arrival and Departure

- Upon arrival students may be temperature checked by staff and then will go directly to their home classrooms. **Students will not be allowed to enter the building before 8:00 A.M.** Please keep this in mind when sending students to school.
- Schools will designate routes for entry and exit
 - Kindergarten, first and second grade students should enter and leave using the primary wing (east) door.

- Third, fourth and fifth grade students should enter and leave using the office (south) door.
- Sixth, seventh and eighth grade students should enter and leave using the gym (north) door.



- Staff will supervise entry points and release of students from buses to the appropriate entry door.
- Physical distancing is to be maintained to the greatest extent possible.
- Hand sanitizer will be available at entry/exit points.
- No visitors will be allowed into the building during arrival or dismissal. Students must enter and exit the building alone. Parents/caregivers may meet students outside.

Daily Symptom Checks

Students and staff must self-check for symptoms of COVID-19 and self-certify prior to coming into a school building that they are not displaying any COVID-19 symptoms. Families will be asked to complete a self-certification form at the start of the school year. Students and staff must be free of any and all COVID-19 symptoms to be allowed entrance into the school building. It is possible that temperature checks may need to be performed when entering the building.

COVID-19 Symptoms Include

- Fever of 100 F or greater or chills
- Cough
- Shortness of breath or difficulty breathing
- Fatigue
- Muscle or body aches
- Headache (not due to a chronic condition)
- New loss of taste or smell
- Sore throat
- Congestion or runny nose (not due to known allergies)
- Nausea or vomiting
- Diarrhea

BinaxNOW testing

The District will be offering the diagnostic BinaxNOW test. If a student is symptomatic, a parent can utilize Abbott BinaxNOW COVID-19 Antigen POC testing as offered by Kings School. Parents would need to consent to testing. Parents will receive a consent form at the beginning of the year that will need to be signed and returned to the school. In addition, parents will be contacted by phone if we feel there is a need to test your child at school. Our hope is that this allows for more students to remain in the learning environment throughout the school year.

Who is Eligible for BinaxNOW Testing?

- For a student or staff on quarantine because spouse, child, parent, sibling, or any other family member/close contact to them tests positive so they can go into isolation status of 10 days if they test positive. Please note that no one is able to test out of quarantine with a negative test in this situation. This is only to identify additional positive cases with close contacts that could test into isolation status, rather than wait out a 14 day quarantine.
- For any asymptomatic student or staff that are unable to understand/physically cannot provide a saliva sample for the Safeguard test, but want to participate in screening.
- As a second weekly screening test, in addition to the Safeguard saliva test, for staff who must work within 6-foot distance for longer than 15 minutes due to student need or have higher exposure risk due to the nature of their work in our schools (custodians, school nurses, CNA's, therapists, etc.).
- As a second weekly screening test, in addition to the Safeguard saliva test, for staff or students who are medically at higher risk or have someone living with them at home that is medically high risk.

- To test asymptomatic individuals when there is an outbreak declared to identify additional positives.
- To diagnose students or staff that become symptomatic while at school. Symptomatic students/staff would be isolated and sent home per the current protocol, but could make an appointment for a test.

Sharing of Materials

- The sharing of an individual's personal materials is discouraged .
- Any materials that are to be used by multiple students will be cleaned prior to use.
- Classroom community materials (pencils, crayons, etc.) will no longer be allowed.
- Students will have their own individual materials and at times may have a personal instructional manipulative bag.

Technology

- Students in grades K-8 will have an individual device assigned to them.
- Families will be asked during the registration process if they have access to the internet at home. For families who do not have internet access at home, the District will work with families to obtain access so that students can engage in remote learning experiences as necessary.

Additional Practices

- Parents/guardians of student/students who have been in close contact with someone who has a confirmed positive for COVID-19 within the past 14 days or anyone experiencing symptoms of COVID-19 should not come to school and should inform their school secretary immediately.
- Staff members who have been in close contact with someone who has a confirmed positive for COVID-19 within the past 14 days or anyone experiencing symptoms of COVID-19 should not report to school and should inform an administrator immediately.
- Close contact, according to the CDC, is defined as being within 6-feet of another person for longer than 15 minutes.
- Students or staff who show symptoms at school will be sent to the school office. Currently, the district is working to implement the use of on-site screening and testing.

Sending Students to the Office

- Staff should call or email the office prior to sending a student to the office to ensure physical distancing.
- Small cuts and bumps, minor complaints and lost baby teeth should be managed in the

classroom whenever possible. Classroom teachers will be provided with first aid kits.

- Staff concerned about a minor student complaint can call the office.
- Snacks for students with diabetes will be relocated to another location in the school (classroom). Teachers/office staff will be trained to provide care for any student with diabetes in order to keep students in the classroom and reduce exposure.
- Office visits will be resolved as quickly as possible to avoid prolonged contact.

Students or Staff Who Show Signs of Illness at School

COVID-19 symptoms may appear 2-14 days after exposure to the virus. If students or staff describe or display any of the symptoms below staff should call the office to refer the student for further assessment. People with these symptoms may have COVID-19 and may possibly be sent home with a recommendation to see their health care provider:

- Fever of 100 F or greater or chills
- Cough
- Shortness of breath or difficulty breathing
- Fatigue
- Muscle or body aches
- Headache (not due to a chronic condition)
- New loss of taste or smell
- Sore throat
- Congestion or runny nose (not due to known allergies)
- Nausea or vomiting
- Diarrhea

Office Response

- Office staff will wear appropriate PPE in conjunction with universal precautions and proper hand hygiene when working with students per CDC guidelines.
- Staff members that present symptoms will be sent home with a recommendation to see their health care provider.
- Students that present symptoms will receive a surgical mask if tolerated and developmentally appropriate, and will be taken to a separate evaluation room.
- The student's parents will be called to pick up their child. If a parent cannot be reached, the office will begin calling emergency contacts.
- Students and staff will follow CDC guidelines for returning to school.

Picking Up Your Child From School

- Parents and guardians are asked to call the school office to inform them they have arrived to pick up their child.

- A staff member will escort the student to the parent and/or guardian's car and ask the parent/guardian to sign out their child.
- Any person entering the school building must self-certify that they are free of symptoms of Covid 19 and must also wear a mask.

Current Exclusion Guidelines from IDPH Exclusion guidelines are expected to be updated shortly. This link provides the current quarantine guidelines to be followed by school. Students can be quarantined anywhere from 10 to 14 days. The district is reviewing the Test to Stay option for schools to provide on-site testing for students with close contact and/or symptoms.

Bus Transportation

All District 144 transportation services will follow the procedures and expectations outlined below that align with ISBE, IDPH and OCHD guidelines. These procedures will be updated with any change in guidelines and students and families will be informed of any changes procedures and expectations regarding transportation.

- All individuals on a bus must wear a face covering.
- Physical distancing must be maintained to the greatest extent possible.
- Parents/Students must complete a self-certified COVID-19 symptom check before boarding a bus.
- Drivers must wear approved and appropriate PPE and perform regular hand hygiene.
- Drivers who become ill during their route should contact their supervisor immediately, and the school district should be notified.
- Seating charts will be used on all routes. To the extent possible, schools will place students in the same household in a seat together.
- Schools and transportation providers will to the best of their ability monitor students at school loading and unloading zones.
- IEP or 504 teams will determine individual transportation needs for students who require special accommodations.
- Considerations will be given to the provision of appropriate supplies to prevent the spread of COVID-19 (e.g., hand sanitizers, gloves, face coverings, tissues, and trash receptacles).
- Sanitization will be completed daily or between use on all vehicles used for student transportation. Transportation providers will disinfect vehicles using only products that meet the EPA criteria and manufacturers' guidelines.

Food Service

Kings School food service will follow the procedures and expectations outlined below that align with ISBE, IDPH and OCHD guidelines. These procedures will be updated with any change in guidelines and students and families will be informed of any changes procedures and expectations regarding transportation.

- Kings School will provide lunch to all students placing an order.
- Student lunch groups will be split to allow for social distancing. (gym and cafeteria will be used to serve lunch) Students will have assigned seats in case contract tracing is required.
- Sharing of food and utensils will be prohibited.
- Continued vigilance will be in place regarding food allergies and dietary needs.
- All food service items will be handled with gloves and washed with dish soap and hot water or in a dishwasher if available.
- Food service personnel will use appropriate PPE, including gloves and face coverings, while preparing and distributing food. Frequent hand hygiene is also required. Individuals will wash their hands after removing their gloves or after directly handling food service items that have been used.

ESSER III 2021-2024

This document is to serve as the Kings CCSD 144 plan for the safe reopening of schools in the 2021-2022 school year. Likewise, its purpose is to outline how funds from the Elementary and Secondary School Emergency Relief (ESSER III) will be used by the district over the next 3 years. This plan focuses on four areas to ensure the safety of our students and staff as well as addresses learning loss that may have occurred during the COVID-19 global pandemic. The four areas of focus are Academic Supports, Social/Emotional Supports, Health/Safety Resources, and Capital Improvements.

Allowable Uses:

- Coordinate emergency funding
- Purchase cleaning supplies
- Educational technology
- Mental health supports
- Supplementary learning
- Added needs for at risk population

- Transportation
- Coordinated services for long term closures
- Professional development
- Other grant allowable expenses
- McKinney Vento Expenses
- Parent education
- Learning loss (Required for ESSER III)
- Improving air quality
- Improving facilities
- Implementing public health acts
- Module classrooms

Academic Supports: The research is clear; there is no substitute for a high-quality, in-person teaching experience to ensure academic success. The global pandemic interrupted our instructional model and forced schools to provide instruction in a variety of ways (e.g. remote, hybrid, asynchronous, etc.). We believe these supports are sustainable beyond the issuance of these funds and will continue to support students for years to come. As we return to full-time, in-person instruction we will do the following:

- Continue to Pay for Intervention Teacher to support Tier 2 & Tier 3 problem solving and interventions. Rationale: Identify student needs while also matching specific skills and interventions. Support classroom teachers to ensure quality Tier 2 instruction. Oversee data collection while also ensuring validity and reliability of interventions. Use targeted and specialized instruction to meet the needs of identified students in math and reading during the school day. Provide progress monitoring and make data driven decisions.
- Use academic testing to identify learning gaps.
- Use research-based curricular programs.
- Implement in-school reading interventions.
- Purchase Educational Technology and Digital Learning Resources.
- Implement in-school math interventions.
- Address the needs of children from low-income families, children with disabilities, English Learners, marginalized groups, students experiencing homelessness, and foster care youth.
- Provide family engagement opportunities for assisting parents and families on how they can effectively support students.
- Provide staff professional development opportunities and release time to complete activities.

Our plan recognizes that no less than 20% of all ESSER III funds must be used to address learning loss. The cost supports listed above comprise more than 20% of the funds granted. In order to support student success within the school day, data will be analyzed to determine the supports that are needed for each student.

Goal: By the end of the 2023-24 school year, 80% of students in K-8 on a nationally normed assessment will be at or above grade level.

Social/Emotional Supports & Communication: We recognize that living through a global pandemic has taken an emotional toll on our communities. It is clear that schools will play a vital role in helping students and staff deal with any trauma the pandemic may have caused. As we return to full-time in-person instruction, we are committed to providing the social-emotional support that our students need and to intentionally engage all families in the educational environment:

- Implement evidence-based SEL programs. Rationale: The connection to the school community has been frayed for some due to lack of physical presence within the school environment due to COVID-19. Some of our students have not been present in school since March 2020. Therefore, to support increased engagement within the school environment the school will implement a comprehensive SEL program that addresses individual, classroom, and school community needs.
- Provide social/emotional/behavioral support to students by way of counselors and social workers.
- Implement social/emotional screening tools to identify which students need support.
- Provide professional development for teachers in the area of social/emotional learning and trauma.

The District's plan to address the social/emotional needs of our students will be individualized due to the varying SEL needs of students in kindergarten through eighth grade.

Goal: To create a sustainable SEL implementation plan that includes opportunities for access for all.

Health and Safety Resources: Health and safety of our students and staff is always our top priority. The COVID-19 Global Pandemic has taught us important lessons on how to follow the safety guidelines to keep our students and staff safe. These include, but are not limited to cleaning protocols, hand sanitizing, physical distancing, and virus suppression. While the vaccine provides some sense of protection, we will continue to require additional

safety measures for the 2021-2022 school year. As we return to full-time, in-person instruction we will do the following:

- Utilize EPA/OSHA approved cleansers for frequently touched surfaces and materials.
- Purchase PPE.
- Ensure mask wearing protocols when required or necessary.
- Provide training and professional development on cleaning, disinfecting, sanitizing and reduction of virus transmission.
- Purchase supplies and equipment to sanitize and clean facilities.
- Plan for long-term closures, including providing meals to eligible students/families.
- Provide water bottle filler stations instead of drinking fountains.
- Pay for HVAC Upgrades to building

Schools play a major role in keeping communities safe. To that end, we will continue to follow both best practices and science when it comes to the health and safety of our students and staff. Many of the health and safety protocols put in place during the 2020-21 school year will continue into the 2021-22 school year.

Goal: Continually monitor guidance from CCDPH, IDPH, and ISBE to adjust the learning environments as needed for our buildings to remain open for in-person learning for all students to the greatest extent possible.

Capital Improvements: The ESSER III funds provide districts with the opportunity to resolve structural issues that may need to be addressed within their schools. These capital improvements help improve the learning environment and make schools safer for students and staff. As we return to full-time, in-person instruction we will do the following:

- Implement outdoor learning spaces.
- Enhance physical, digital, and online security.

We have learned a great deal from the global pandemic. The focus of our improvements will be on ways we can provide a safer environment and improving the tools in our teachers' hands. To that end, we plan to ensure each classroom has the necessary technology to implement engaging lessons for all students. We also plan on making the most of our large spaces (i.e. gyms and cafeterias) to allow for social distancing if necessary.

Goal: Over the next three years, we will increase the number of functional spaces for students and staff by upgrading existing facilities for learning.

Student COVID-19 Self-Certification and Verification Form

In response to the COVID-19 pandemic and in order to ensure a safe and healthy environment for our school community, Joint Guidance from the Illinois State Board of Education and the Illinois Department of Public Health requires that every student undergo a daily symptom screening prior to utilizing District 144 transportation or entering the school building.

Parents/Guardians MUST conduct this daily symptom screening prior to their student departing for school and report any symptoms in writing (as outlined below). This form must be signed and returned to the School District prior to the start of the 2021-2022 school year. Students will not be allowed to participate in in-person instruction until this form has been completed and returned to school.

I verify that prior to utilizing District transportation and/or entering a District building, my student will receive a daily symptom screening at home by an adult caregiver to determine if my student is experiencing any of the following COVID-19 symptoms:

- Temperature of 100.4 (or greater) degrees Fahrenheit/38 degrees Celsius;
- Uncontrolled cough that causes difficulty breathing (for students with chronic allergic/asthmatic cough, a change in their cough from baseline);
- Shortness of breath or difficulty breathing;
- Chills;
- Fatigue;
- Muscle and body aches;
- New onset of severe headache, especially with a fever;
- Sore throat;
- New loss of taste or smell;
- Nausea and/or vomiting;
- Diarrhea; or
- Any other COVID-19 symptoms identified by the CDC or IDPH.

By sending my student on District 144 transportation and/or to school on any given day, I am certifying and verifying that my student has received a daily symptom screening and is not experiencing any COVID-19 symptoms. If my student is experiencing any of the above symptoms at the time of the daily screening, I will notify the school of my student's absence and report the symptoms my student is currently experiencing. If District staff contacts me to gather additional information related to the results of my student's daily screening, I will provide the requested information.

I will notify the school that my student will be absent pending further direction from the District if:

- (1) my student receives a diagnosis of COVID-19;
- (2) my student is suspected of having COVID-19;
- (3) my student comes in close contact (definition below) with an individual who tested positive for COVID-19 or is suspected of having COVID-19; or
- (4) my student traveled internationally.

If the District staff contacts me to gather additional information related to the reason(s) for my student's absence, I will provide the necessary information as requested.

By sending my student on District transportation and/or to school on any given day, I am certifying and verifying that my student is not subject to an isolation or quarantine protocol related to COVID-19. For

COVID-19, the CDC defines a "close contact" as "any individual who was within 6 feet of an infected person for at least 15 minutes starting from 2 days before illness onset (or, for asymptomatic patients, 2 days prior to positive specimen collection) until the time the patient is isolated."

Name of Student: _____

Grade Level: _____

Parent/Guardian Signature _____

Printed Name _____

Date _____

COVID-19 Screening Informed Consent

This consent form provides Kings CCSD #144 (“School District”) my permission to perform a nasal swab or oral swab/collection as part of COVID-19 screening test upon my child (“Student”). By signing below, I am indicating that I voluntarily consent to this procedure.

The School District will be using the BinaxNOW rapid antigen test which has been granted Emergency Use Authorization by the U.S. Food and Drug Administration (“FDA”) and is being supplied by the Illinois Department of Public Health. Additional information is available at <https://www.dph.illinois.gov/covid19/community-guidance/LHD-binaxNow-allocation> and [https://www.abbott.com/BinaxNOW-Test-NAVICA-App.html#/.](https://www.abbott.com/BinaxNOW-Test-NAVICA-App.html#/)

A rapid test alone may not be sufficient to detect or rule out the possibility of exposure to or infection with COVID-19. You should carefully monitor your child’s symptoms, and notwithstanding the results of any testing, your child must stay home and should consult with your physician if your child experiences symptoms of COVID-19. Because of the ongoing public-health crisis, the School District is required to share the results of your test with public health authorities, including the Illinois and County Departments of Public Health. By signing below, I consent to the disclosure of such information as requested, recommended or required by federal, state, and local public health authorities.

Privacy Notice

We are collecting your child’s test sample and other information to determine the presence of the COVID-19 virus and antibodies to determine possible past exposure to the virus and to provide you with information on your child’s results. Access to your child’s private information will be limited to the District staff conducting the test, District administrative staff, local and state public health staff, or their contractors to conduct virus investigations or other public health activities, or other persons or entities authorized by law. You also understand that your child’s records are protected under state and federal privacy laws and cannot be disclosed without your written consent, unless otherwise provided by law. By providing your consent, you authorize your child’s information and test results to be shared as described in this document.

Disclosure to Government Authorities: I acknowledge and agree that the School District may disclose my child’s test results and associated information to appropriate county, state, or other governmental and regulatory entities as may be permitted by law.

Authorization and Consent for COVID-19 Testing:

I voluntarily consent and authorize the School District to conduct collection, testing, and analysis for the purposes of a COVID-19 screening test. I acknowledge and understand that my child’s COVID-19 test will require the collection of an appropriate sample by a district nurse or trained member of the staff through a nasopharyngeal swab, oral swab, or other recommended collection procedures. I understand that there are risks and benefits associated with undergoing a test for COVID-19 including the possibility of slight discomfort and/or an incorrect result (false positive or false negative test results). I waive any claims against the Board of Education, its members, administrators and employees relating to the administration and reporting of this test.

I also understand that I have the right to discuss the proposed testing with my physician, to learn about the purpose, potential risks and benefits of any testing. I assume complete and full responsibility to take appropriate action with regards to my child's test results. Should I have questions or concerns regarding my child's results, or a worsening of my child's condition, I shall promptly seek advice and treatment from an appropriate medical provider. I further understand that the antigen testing is a screening protocol, is not a form of treatment, and that I should consult my medical provider with any treatment questions.

Acknowledgment:

I acknowledge and agree that I have read, understand, and agreed to the statements contained within this form. I have been informed about the purpose of the COVID-19 test being used, procedures to be performed, potential risks and benefits, and any associated costs. I have been provided an opportunity to ask questions before proceeding with a COVID-19 test and I understand that if I do not wish to continue with the collection, testing, or analysis of a COVID-19 test, I may decline to receive continued services. I have read the contents of this form in its entirety and voluntarily consent for my child to undergo testing for COVID-19.

STUDENT NAME: _____

PARENT/GUARDIAN NAME: _____

PARENT/GUARDIAN SIGNATURE: _____

CONTACT PHONE NUMBER: _____

DATE (mm/dd/yyyy): _____

